



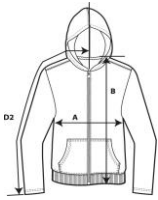
**6759 - NEW!**

**Adult Tri-Blend Full-Zip Hooded Jacket**



**DETAILS**

<b>Weight</b>	159.0 G/SqM
<b>Content</b>	50% Polyester, 25% Combed Ring Spun Cotton, 25% Rayon
<b>Features</b>	Fabric 30/1 High stitch density for smoother printing surface Unlined hood Semi-fitted Side seam construction Contrast Charcoal metallic zipper Pouch pockets Twin-needle sleeve hem Self-fabric band TearAway label Oeko-Tex® Standard 100 Certified
<b>Sizes</b>	S-2XL
<b>Case Packs</b>	S - 2XL    36 PIECES
<b>Colours</b>	6
<b>SKU's</b>	30



**SPECIFICATIONS**

	<b>Tol-</b>	<b>Tol+</b>	<b>S</b>	<b>M</b>	<b>L</b>	<b>XL</b>	<b>2XL</b>
<b>Centimeters</b>							
<b>Chest (A)</b>	1.905	1.905	45.720	50.800	55.880	60.960	66.040
<b>Length from HPS (B)</b>	2.540	2.540	67.945	71.120	73.660	76.200	79.375
<b>Sleeve length (centre back) (D2)</b>	2.540	2.540	80.010	84.455	88.900	92.710	96.520
<b>Inches</b>							
<b>Chest (A)</b>	0.750	0.750	18.000	20.000	22.000	24.000	26.000
<b>Length from HPS (B)</b>	1.000	1.000	26.750	28.000	29.000	30.000	31.250
<b>Sleeve length (centre back) (D2)</b>	1.000	1.000	31.500	33.250	35.000	36.500	38.000

**S-2XL**

<b>COLOURS</b>	Code
Black	036
Heather Blue	321
Heather Caribbean Blue	519
Heather Dark Grey	334
Heather Grey	346
Heather Red	234

**CHANGES**

<b>Additions</b>	
S, M, L, XL, 2XL	Black, Heather Blue, Heather Caribbean Blue, Heather Dark Grey, Heather Grey Heather Red
Total Net Change 30 SKU's	