



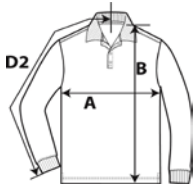
**85900**



**Premium Cotton Adult Long Sleeve Double Pique Polo**

**DETAILS**

<b>Weight</b>	223.0 G/SqM (White 214.0 G/SqM)
<b>Content</b>	100% Ring Spun Cotton
<b>Features</b>	Eurofit Sideseamed with side vents Contoured welt collar and cuffs Heat transfer label Rolled forward topstitched shoulder Clean finished placket with reinforced bottom box 3 colour-matched buttons Twin needle bottom hem
<b>Sizes</b>	S-3XL
<b>Case Packs</b>	S - 3XL      36 PIECES
<b>Colours</b>	6
<b>SKU's</b>	36



**SPECIFICATIONS**

Centimeters	ToI-	ToI+	S	M	L	XL	2XL	3XL
<b>Chest/Pecho (A)</b>	1.270	1.270	50.038	53.340	55.880	58.928	61.976	66.040
<b>Length from HPS/Largo desde HPS (B)</b>	2.540	2.540	70.510	73.660	77.470	81.280	84.506	87.376
<b>Sleeve length (Center back) (D2)</b>	1.270	1.270	82.550	85.090	87.376	89.916	92.456	94.996

Inches	ToI-	ToI+	S	M	L	XL	2XL	3XL
<b>Chest (A)</b>	0.500	0.500	19.700	21.000	22.000	23.200	24.400	26.000
<b>Length from HPS (B)</b>	1.000	1.000	27.760	29.000	30.500	32.000	33.270	34.400
<b>Sleeve length (Center back) (D2)</b>	0.500	0.500	32.500	33.500	34.400	35.400	36.400	37.400

**S-3XL**

COLOURS	Code	Comments
Black	036	
Navy	032	
Red	040	
Ring Spun Sport Grey	295	90% Cotton, 10% Polyester
Royal	051	
White	030	

**CHANGES**

Total Net Change 0 SKU's