



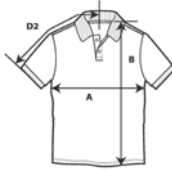
**72800B**



**DryBlend Youth Double Pique Polo**

**DETAILS**

<b>Weight</b>	203.0 G/SqM (White 196.0 G/SqM)
<b>Content</b>	35% Ring Spun Cotton, 65% Polyester
<b>Features</b>	DryBlend® technology: delivers moisture-wicking properties Sideseamed Contoured welt collar and cuffs Heat transfer label Clean finished placket with reinforced bottom box 2 colour-matched buttons Twin needle bottom hem CPSIA Tracking Label Compliant
<b>Sizes</b>	XS-XL
<b>Case Packs</b>	XS - XL 36 PIECES
<b>Colours</b>	13
<b>SKU's</b>	65



**SPECIFICATIONS**

Centimeters	Tol-	Tol+	XS	S	M	L	XL
<b>Chest (A)</b>	2.540	2.540	36.830	40.640	43.180	45.720	48.260
<b>Length from HPS (B)</b>	2.540	2.540	43.180	48.260	53.340	59.690	66.040
<b>Sleeve length (Center back) (D2)</b>	2.540	2.540	30.480	33.020	34.925	38.100	40.640

Inches	Tol-	Tol+	XS	S	M	L	XL
<b>Chest (A)</b>	1.000	1.000	14.500	16.000	17.000	18.000	19.000
<b>Length from HPS (B)</b>	1.000	1.000	17.000	19.000	21.000	23.500	26.000
<b>Sleeve length (Center back) (D2)</b>	1.000	1.000	12.000	13.000	13.750	15.000	16.000

**XS-XL**

COLOURS	Code	
Black	036	
Charcoal	042	
Dark Heather	108	
Forest Green	033	
Light Blue	069	
Maroon	083	
Navy	032	
Purple	081	
Red	040	
Ring Spun Sport Grey	295	
Royal	051	
Safety Green	188	Compliant with ANSI / ISEA 107
White	030	

**CHANGES**

Total Net Change 0 SKU's